



Pakkaspotti

Oil Per Board: 40 uL Oil Pattern Distance: 43 Feet Volume Oil Total: 26.64 mL Total Boards Crossed: 666 Boards

Forward Oil Total: 16.16 mL
Forward Boards Crossed: 404 Boards

Reverse Oil Total: 10.48 mL
Reverse Boards Crossed: 262 Boards

Drop 37'

Conditioner:
Kegel Ice

TransferType:
Kegel Ice

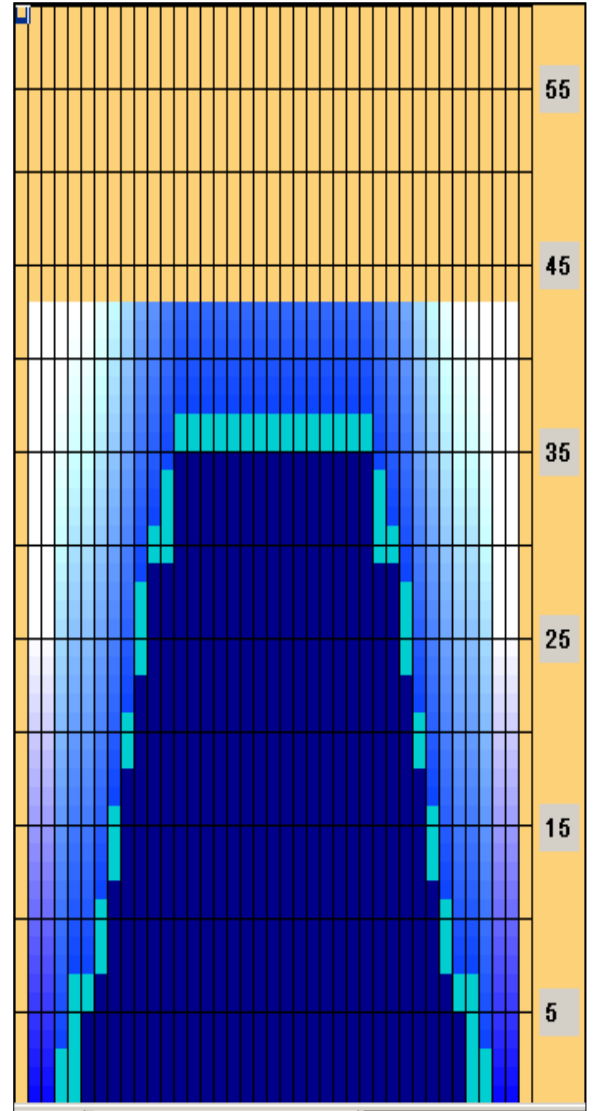
	Start	Stop	Loads	Speed	Crossed	Start	End	Feet	T.Oil
1	4L	4R	3	14	99	0.0	3.9	3.9	3960
2	5L	5R	2	14	62	3.9	7.8	3.9	2480
3	7L	7R	2	14	54	7.8	11.7	3.9	2160
4	8L	8R	2	18	50	11.7	16.8	5.1	2000
5	9L	9R	2	18	46	16.8	21.9	5.1	1840
6	10L	10R	2	22	42	21.9	28.1	6.2	1680
7	11L	11R	1	22	19	28.1	31.2	3.1	760
8	12L	12R	1	22	17	31.2	34.3	3.1	680
9	13L	13R	1	26	15	34.3	37.9	3.6	600
10	2L	2R	0	30	0	37.9	43.0	5.1	0

Forward

Reverse

Combined

Buff



	Start	Stop	Loads	Speed	Crossed	Start	End	Feet	T.Oil
1	2L	2R	0	26	0	43.0	35.0	-8.0	0
2	13L	13R	2	22	30	35.0	28.8	-6.2	1200
3	11L	11R	2	22	38	28.8	22.6	-6.2	1520
4	10L	10R	2	18	42	22.6	17.5	-5.1	1680
5	9L	9R	2	18	46	17.5	12.4	-5.1	1840
6	8L	8R	2	18	50	12.4	7.3	-5.1	2000
7	7L	7R	1	18	27	7.3	4.8	-2.5	1080
8	6L	6R	1	18	29	4.8	2.3	-2.5	1160
9	2L	2R	0	10	0	2.3	0.0	-2.3	0

Arrow Zone Ratios

Item	2-5L:16L-20	6-10L:16-20	11-15L:16L-20	16L-20:20-16R	16L-20:20-16R	20-16R:15-11R	20-16R:10-6R	20-16R:5-2R
ul Arrow	80	528	1064	1120	1120	1064	528	80
Zone Ratio	14	2.12	1.05	1	1	1.05	2.12	14

Track Zone Ratios

Item	3L-7L:18L-18R	8L-12L:18L-18R	13L-17L:18L-18R	18L-18R:17R-13R	18L-18R:12R-8R	18L-18R:7R-3R
Description	Outside Track:Middle	Middle Track:Middle	Inside Track:Middle	Middle: Inside Track	Middle:Middle Track	Middle:Outside Track
Track Zone Ratio	6.09	1.4	1	1	1.4	6.09

