



KEV Games

Oil Per Board: 50 uL Oil Pattern Distance: 42 Feet Volume Oil Total: 26.2 mL Total Boards Crossed: 524 Boards

Forward Oil Total: 13.8 mL
Forward Boards Crossed: 276 Boards

Reverse Oil Total: 12.4 mL
Reverse Boards Crossed: 248 Boards

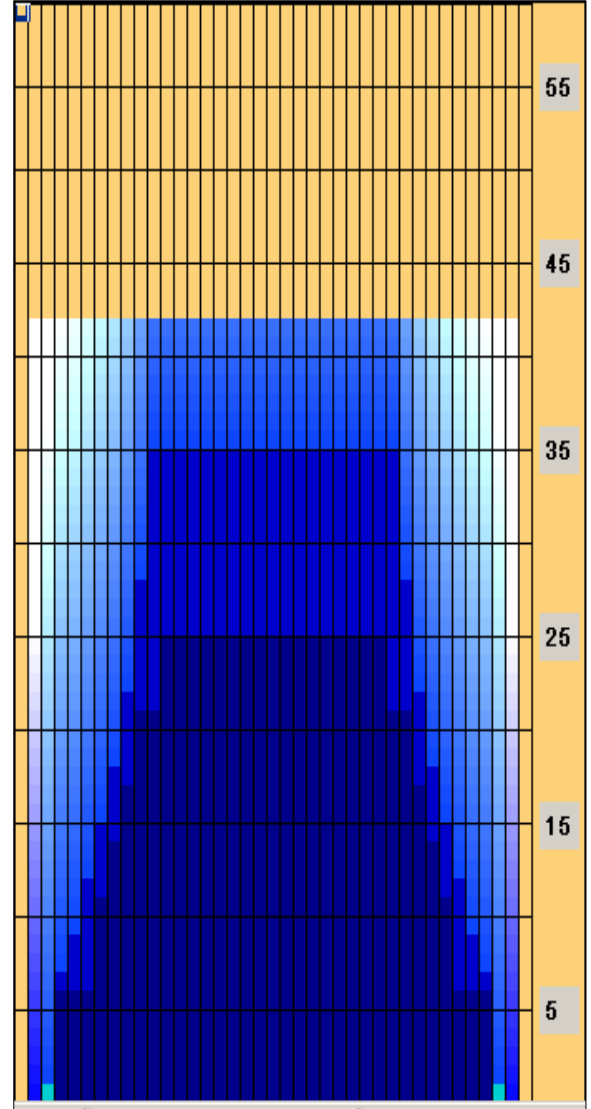
Drop brush 35'

Conditioner:
Kegel Ice

TransferType:
Transfer Brush

	Start	Stop	Loads	Speed	Crossed	Start	End	Feet	T.Oil
1	3L	3R	2	10	70	0.0	1.4	1.4	3500
2	4L	4R	2	18	66	1.4	6.5	5.1	3300
3	7L	7R	2	18	54	6.5	11.6	5.1	2700
4	8L	8R	1	22	25	11.6	14.7	3.1	1250
5	9L	9R	1	22	23	14.7	17.8	3.1	1150
6	10L	10R	1	26	21	17.8	21.4	3.6	1050
7	12L	12R	1	26	17	21.4	25.0	3.6	850
8	2L	2R	0	30	0	25.0	42.0	17.0	0

	Start	Stop	Loads	Speed	Crossed	Start	End	Feet	T.Oil
1	2L	2R	0	26	0	42.0	35.0	-7.0	0
2	11L	11R	2	26	38	35.0	27.7	-7.3	1900
3	10L	10R	2	22	42	27.7	21.5	-6.2	2100
4	9L	9R	1	22	23	21.5	18.4	-3.1	1150
5	8L	8R	1	22	25	18.4	15.3	-3.1	1250
6	7L	7R	1	22	27	15.3	12.2	-3.1	1350
7	6L	6R	1	22	29	12.2	9.1	-3.1	1450
8	5L	5R	1	18	31	9.1	6.6	-2.5	1550
9	4L	4R	1	18	33	6.6	4.1	-2.5	1650
10	2L	2R	0	10	0	4.1	0.0	-4.1	0



- Forward
- Reverse
- Combined
- Buff

Arrow Zone Ratios

Item	2-5L:16L-20	6-10L:16-20	11-15L:16L-20	16L-20:20-16R	16L-20:20-16R	20-16R:15-11R	20-16R:10-6R	20-16R:5-2R
ul Arrow	162.5	600	990	1000	1000	990	600	162.5
Zone Ratio	6.15	1.67	1.01	1	1	1.01	1.67	6.15

Track Zone Ratios

Item	3L-7L:18L-18R	8L-12L:18L-18R	13L-17L:18L-18R	18L-18R:17R-13R	18L-18R:12R-8R	18L-18R:7R-3R
Description	Outside Track:Middle	Middle Track:Middle	Inside Track:Middle	Middle: Inside Track	Middle:Middle Track	Middle:Outside Track
Track Zone Ratio	3.33	1.22	1	1	1.22	3.33

