



# Pakkaspotti

Oil Per Board: 40 uL      Oil Pattern Distance: 40 Feet      Volume Oil Total: 24.4 mL      Total Boards Crossed: 610 Boards

Forward Oil Total: 14.72 mL  
Forward Boards Crossed: 368 Boards

Reverse Oil Total: 9.68 mL  
Reverse Boards Crossed: 242 Boards

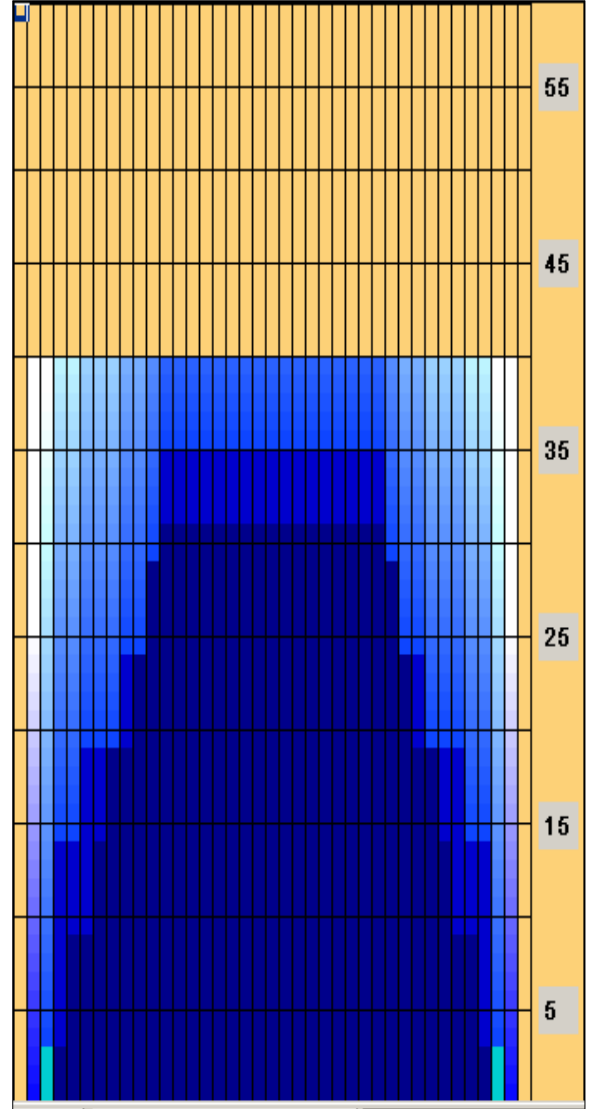
Drop Brush 37'

Conditioner:  
Kegel Ice

TransferType:  
Transfer Brush

	Start	Stop	Loads	Speed	Crossed	Start	End	Feet	T.Oil
1	3L	3R	3	14	105	0.0	3.9	3.9	4200
2	5L	5R	2	18	62	3.9	9.0	5.1	2480
3	7L	7R	2	18	54	9.0	14.1	5.1	2160
4	8L	8R	2	18	50	14.1	19.2	5.1	2000
5	10L	10R	2	18	42	19.2	24.3	5.1	1680
6	11L	11R	2	18	38	24.3	29.4	5.1	1520
7	12L	12R	1	18	17	29.4	31.9	2.5	680
8	2L	2R	0	30	0	31.9	40.0	8.1	0

	Start	Stop	Loads	Speed	Crossed	Start	End	Feet	T.Oil
1	2L	2R	0	26	0	40.0	35.0	-5.0	0
2	12L	12R	2	22	34	35.0	28.8	-6.2	1360
3	11L	11R	2	18	38	28.8	23.7	-5.1	1520
4	9L	9R	2	18	46	23.7	18.6	-5.1	1840
5	6L	6R	2	18	58	18.6	13.5	-5.1	2320
6	4L	4R	2	14	66	13.5	9.6	-3.9	2640
7	2L	6R	0	10	0	9.6	0.0	-9.6	0



Arrow Zone Ratios

Item	2-5L:16L-20	6-10L:16-20	11-15L:16L-20	16L-20:20-16R	16L-20:20-16R	20-16R:15-11R	20-16R:10-6R	20-16R:5-2R
ul Arrow	150	520	936	960	960	936	520	150
Zone Ratio	6.4	1.85	1.03	1	1	1.03	1.85	6.4

Track Zone Ratios

Item	3L-7L:18L-18R	8L-12L:18L-18R	13L-17L:18L-18R	18L-18R:17R-13R	18L-18R:12R-8R	18L-18R:7R-3R
Description	Outside Track:Middle	Middle Track:Middle	Inside Track:Middle	Middle: Inside Track	Middle:Middle Track	Middle:Outside Track
Track Zone Ratio	3.43	1.33	1	1	1.33	3.43

