



Ruskakisa 2023

Oil Per Board: 40 uL Oil Pattern Distance: 42 Feet Volume Oil Total: 23.6 mL Total Boards Crossed: 590 Boards

Forward Oil Total: 12.4 mL
Forward Boards Crossed: 310 Boards

Reverse Oil Total: 11.2 mL
Reverse Boards Crossed: 280 Boards

Drop 40'

Conditioner:
Kegel Ice

TransferType:
Transfer Brush

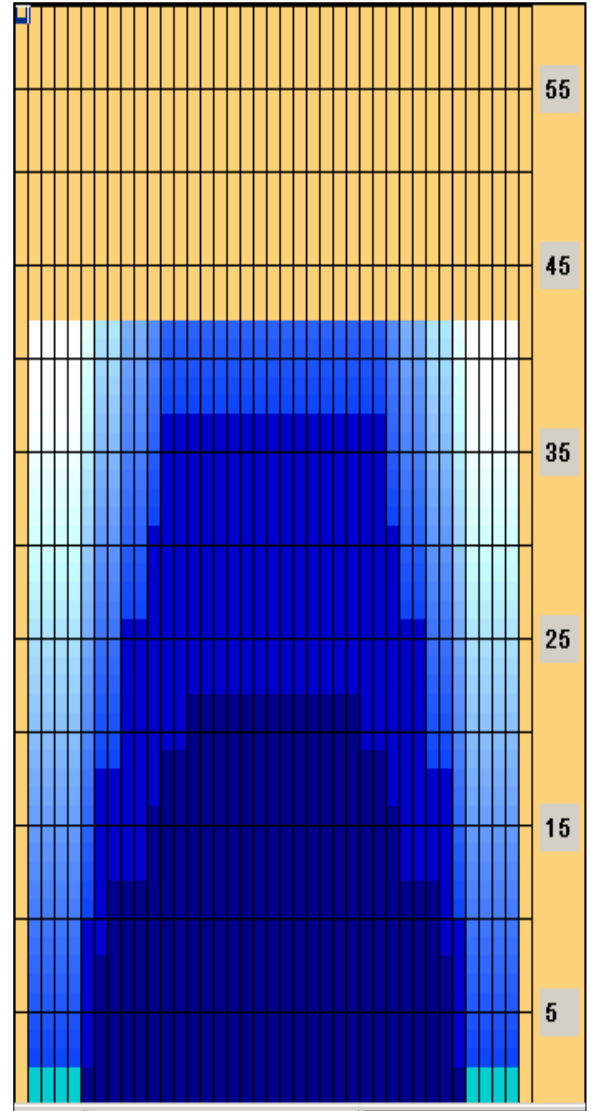
	Start	Stop	Loads	Speed	Crossed	Start	End	Feet	T.Oil
1	2L	2R	3	10	111	0.0	2.8	2.8	4440
2	7L	7R	3	14	81	2.8	8.7	5.9	3240
3	8L	8R	2	14	50	8.7	12.6	3.9	2000
4	11L	11R	2	14	38	12.6	16.5	3.9	1520
5	12L	12R	1	18	17	16.5	19.0	2.5	680
6	14L	14R	1	26	13	19.0	22.6	3.6	520
7	2L	2R	0	26	0	22.6	42.0	19.4	0

Forward

Reverse

Combined

Buff



	Start	Stop	Loads	Speed	Crossed	Start	End	Feet	T.Oil
1	2L	2R	0	30	0	42.0	37.0	-5.0	0
2	12L	12R	2	22	34	37.0	30.8	-6.2	1360
3	11L	11R	2	18	38	30.8	25.7	-5.1	1520
4	9L	9R	3	18	69	25.7	18.1	-7.6	2760
5	7L	7R	3	18	81	18.1	10.5	-7.6	3240
6	6L	6R	2	22	58	10.5	4.3	-6.2	2320
7	2L	2R	0	10	0	4.3	0.0	-4.3	0

Arrow Zone Ratios

Item	2-5L:16L-20	6-10L:16-20	11-15L:16L-20	16L-20:20-16R	16L-20:20-16R	20-16R:15-11R	20-16R:10-6R	20-16R:5-2R
ul Arrow	120	488	912	960	960	912	488	120
Zone Ratio	8	1.97	1.05	1	1	1.05	1.97	8

Track Zone Ratios

Item	3L-7L:18L-18R	8L-12L:18L-18R	13L-17L:18L-18R	18L-18R:17R-13R	18L-18R:12R-8R	18L-18R:7R-3R
Description	Outside Track:Middle	Middle Track:Middle	Inside Track:Middle	Middle: Inside Track	Middle:Middle Track	Middle:Outside Track
Track Zone Ratio	4.8	1.36	1.01	1.01	1.36	4.8

