



KEV Games

Oil Per Board: 40 uL Oil Pattern Distance: 42 Feet Volume Oil Total: 26.76 mL Total Boards Crossed: 669 Boards

Forward Oil Total: 15.08 mL
 Forward Boards Crossed: 377 Boards

Reverse Oil Total: 11.68 mL
 Reverse Boards Crossed: 292 Boards

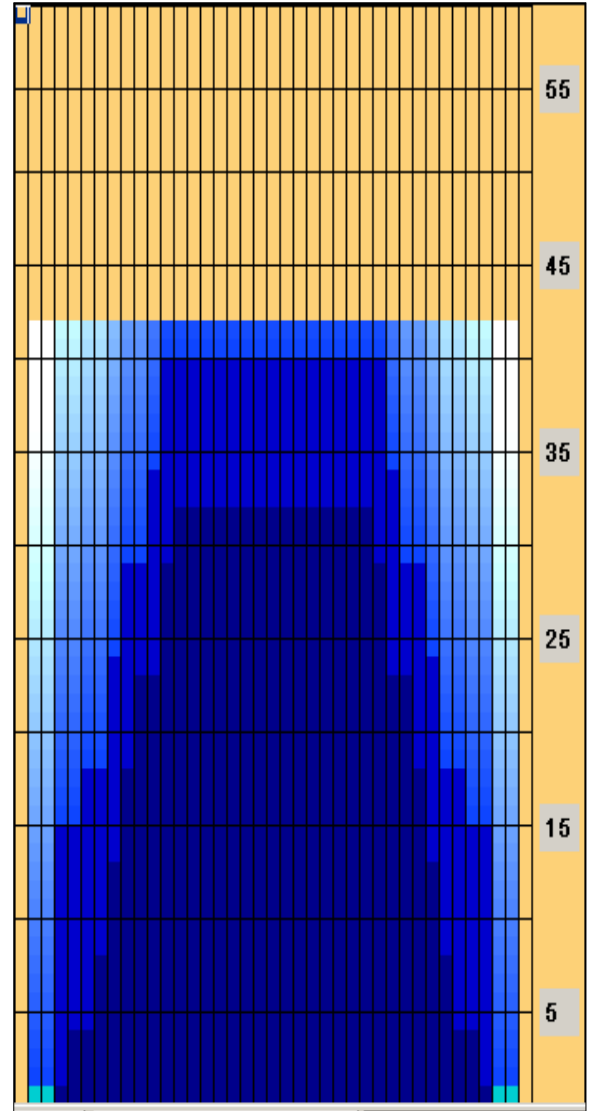
Drop Brush 40'

Conditioner:
Kegel Ice

TransferType:
Transfer Brush

	Start	Stop	Loads	Speed	Crossed	Start	End	Feet	T.Oil
1	2L	2R	2	10	74	0.0	1.4	1.4	2960
2	5L	5R	2	10	62	1.4	4.2	2.8	2480
3	7L	7R	2	14	54	4.2	8.1	3.9	2160
4	8L	8R	2	18	50	8.1	13.2	5.1	2000
5	9L	9R	2	18	46	13.2	18.3	5.1	1840
6	10L	10R	2	18	42	18.3	23.4	5.1	1680
7	12L	12R	2	22	34	23.4	29.6	6.2	1360
8	13L	13R	1	18	15	29.6	32.1	2.5	600
9	2L	2R	0	30	0	32.1	42.0	9.9	0

	Start	Stop	Loads	Speed	Crossed	Start	End	Feet	T.Oil
1	2L	2R	0	26	0	42.0	40.0	-2.0	0
2	12L	12R	2	22	34	40.0	33.8	-6.2	1360
3	11L	11R	2	18	38	33.8	28.7	-5.1	1520
4	9L	9R	2	18	46	28.7	23.6	-5.1	1840
5	8L	8R	2	18	50	23.6	18.5	-5.1	2000
6	6L	6R	2	14	58	18.5	14.6	-3.9	2320
7	4L	4R	2	14	66	14.6	10.7	-3.9	2640
8	2L	2R	0	10	0	10.7	0.0	-10.7	0



Forward
 Reverse
 Combined
 Buff

Arrow Zone Ratios

Item	2-5L:16L-20	6-10L:16-20	11-15L:16L-20	16L-20:20-16R	16L-20:20-16R	20-16R:15-11R	20-16R:10-6R	20-16R:5-2R
ul Arrow	140	560	1032	1080	1080	1032	560	140
Zone Ratio	7.71	1.93	1.05	1	1	1.05	1.93	7.71

Track Zone Ratios

Item	3L-7L:18L-18R	8L-12L:18L-18R	13L-17L:18L-18R	18L-18R:17R-13R	18L-18R:12R-8R	18L-18R:7R-3R
Description	Outside Track:Middle	Middle Track:Middle	Inside Track:Middle	Middle: Inside Track	Middle:Middle Track	Middle:Outside Track
Track Zone Ratio	4.5	1.35	1	1	1.35	4.5

