



Talvikisa

Oil Per Board: 40 uL Oil Pattern Distance: 42 Feet Volume Oil Total: 25.88 mL Total Boards Crossed: 647 Boards

Forward Oil Total: 13.32 mL
Forward Boards Crossed: 333 Boards

Reverse Oil Total: 12.56 mL
Reverse Boards Crossed: 314 Boards

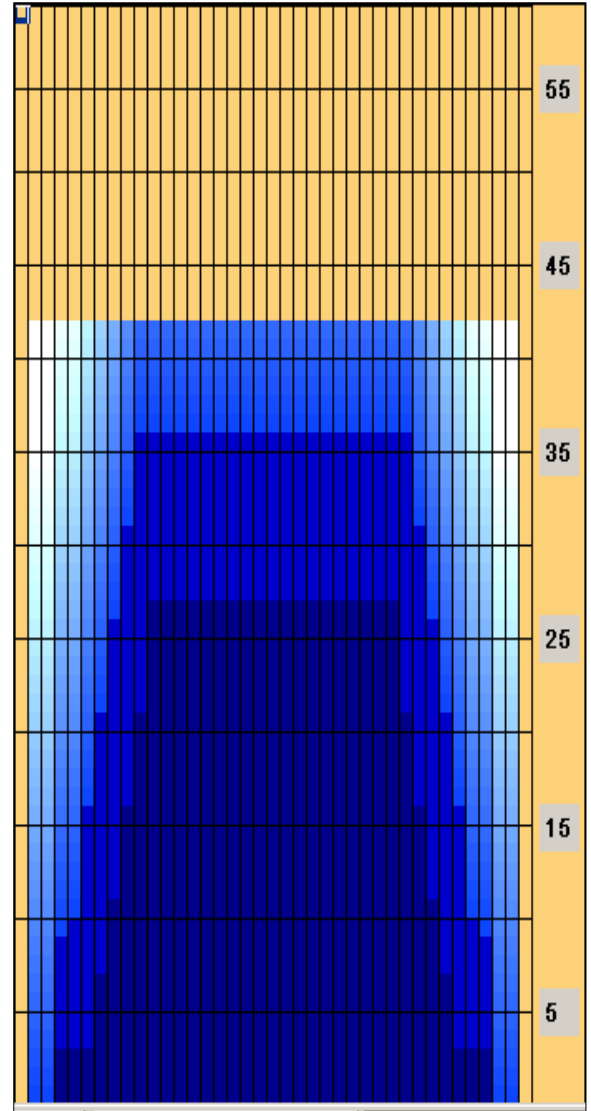
Drop Brush 36'

Conditioner:
Kegel Ice

TransferType:
Transfer Brush

	Start	Stop	Loads	Speed	Crossed	Start	End	Feet	T.Oil
1	2L	2R	1	10	37	0.0	0.0	0.0	1480
2	4L	4R	2	14	66	0.0	3.9	3.9	2640
3	7L	7R	2	14	54	3.9	7.8	3.9	2160
4	8L	8R	2	14	50	7.8	11.7	3.9	2000
5	9L	9R	2	18	46	11.7	16.8	5.1	1840
6	10L	10R	2	18	42	16.8	21.9	5.1	1680
7	11L	11R	2	18	38	21.9	27.0	5.1	1520
8	2L	2R	0	30	0	27.0	42.0	15.0	0

	Start	Stop	Loads	Speed	Crossed	Start	End	Feet	T.Oil
1	2L	2R	0	30	0	42.0	36.0	-6.0	0
2	10L	10R	2	18	42	36.0	30.9	-5.1	1680
3	9L	9R	2	18	46	30.9	25.8	-5.1	1840
4	8L	8R	2	18	50	25.8	20.7	-5.1	2000
5	7L	7R	2	18	54	20.7	15.6	-5.1	2160
6	6L	6R	2	18	58	15.6	10.5	-5.1	2320
7	5L	5R	1	14	31	10.5	8.6	-1.9	1240
8	4L	4R	1	14	33	8.6	6.7	-1.9	1320
9	2L	2R	0	10	0	6.7	0.0	-6.7	0



- Forward
- Reverse
- Combined
- Buff

Arrow Zone Ratios

Item	2-5L:16L-20	6-10L:16-20	11-15L:16L-20	16L-20:20-16R	16L-20:20-16R	20-16R:15-11R	20-16R:10-6R	20-16R:5-2R
ul Arrow	110	600	1000	1000	1000	1000	600	110
Zone Ratio	9.09	1.67	1	1	1	1	1.67	9.09

Track Zone Ratios

Item	3L-7L:18L-18R	8L-12L:18L-18R	13L-17L:18L-18R	18L-18R:17R-13R	18L-18R:12R-8R	18L-18R:7R-3R
Description	Outside Track:Middle	Middle Track:Middle	Inside Track:Middle	Middle: Inside Track	Middle:Middle Track	Middle:Outside Track
Track Zone Ratio	4.46	1.17	1	1	1.17	4.46

