



Kesäkisa 2023

Oil Per Board: 40 uL Oil Pattern Distance: 39 Feet Volume Oil Total: 24.76 mL Total Boards Crossed: 619 Boards

Forward Oil Total: 14.68 mL
Forward Boards Crossed: 367 Boards

Reverse Oil Total: 10.08 mL
Reverse Boards Crossed: 252 Boards

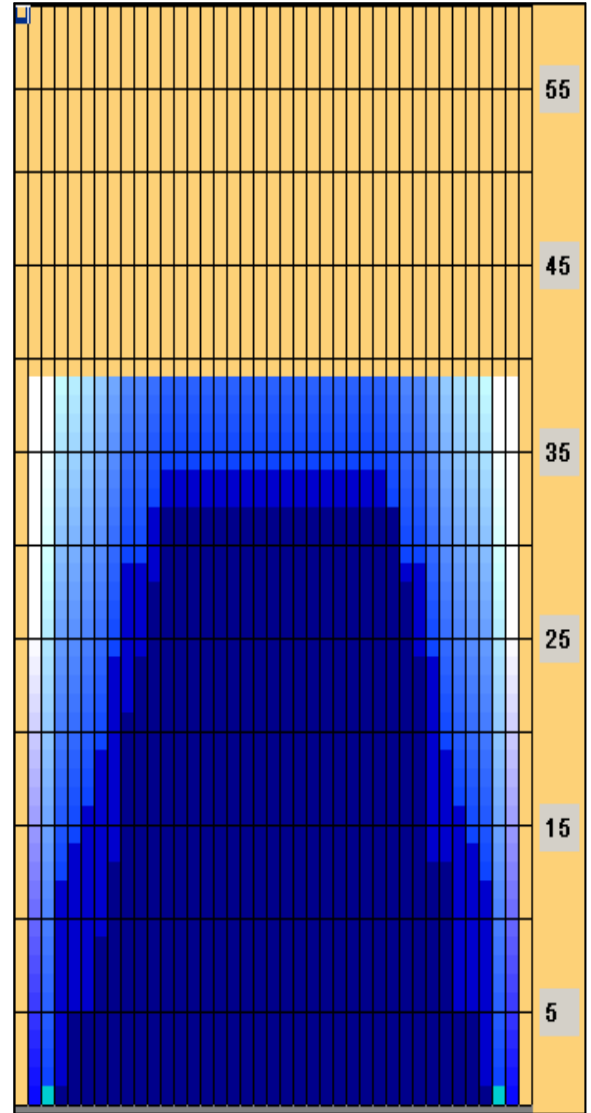
Drop 34'

Conditioner:
Kegel Ice

TransferType:
Transfer Brush

	Start	Stop	Loads	Speed	Crossed	Start	End	Feet	T.Oil
1	3L	3R	2	14	70	0.0	1.9	1.9	2800
2	5L	5R	2	14	62	1.9	5.8	3.9	2480
3	7L	7R	2	14	54	5.8	9.7	3.9	2160
4	8L	7R	2	14	52	9.7	13.6	3.9	2080
5	9L	9R	2	18	46	13.6	18.7	5.1	1840
6	9L	9R	1	22	23	18.7	21.8	3.1	920
7	10L	9R	1	22	22	21.8	24.9	3.1	880
8	11L	10R	1	26	20	24.9	28.5	3.6	800
9	12L	11R	1	26	18	28.5	32.1	3.6	720
10	2L	2R	0	30	0	32.1	39.0	6.9	0

- Forward
- Reverse
- Combined
- Buff



	Start	Stop	Loads	Speed	Crossed	Start	End	Feet	T.Oil
1	2L	2R	0	26	0	39.0	34.0	-5.0	0
2	12L	12R	1	18	17	34.0	31.5	-2.5	680
3	11L	11R	1	18	19	31.5	29.0	-2.5	760
4	9L	9R	2	18	46	29.0	23.9	-5.1	1840
5	8L	8R	2	18	50	23.9	18.8	-5.1	2000
6	7L	7R	1	18	27	18.8	16.3	-2.5	1080
7	6L	6R	1	18	29	16.3	13.8	-2.5	1160
8	5L	5R	1	14	31	13.8	11.9	-1.9	1240
9	4L	4R	1	14	33	11.9	10.0	-1.9	1320
10	2L	2R	0	10	0	10.0	0.0	-10.0	0

Arrow Zone Ratios

Item	2-5L:16L-20	6-10L:16-20	11-15L:16L-20	16L-20:20-16R	16L-20:20-16R	20-16R:15-11R	20-16R:10-6R	20-16R:5-2R
ul Arrow	110	560	944	960	960	952	592	110
Zone Ratio	8.73	1.71	1.02	1	1	1.01	1.62	8.73

Track Zone Ratios

Item	3L-7L:18L-18R	8L-12L:18L-18R	13L-17L:18L-18R	18L-18R:17R-13R	18L-18R:12R-8R	18L-18R:7R-3R
Description	Outside Track:Middle	Middle Track:Middle	Inside Track:Middle	Middle: Inside Track	Middle:Middle Track	Middle:Outside Track
Track Zone Ratio	4.29	1.21	1	1	1.18	4

