



# KEV Games

Oil Per Board: 40 uL      Oil Pattern Distance: 43 Feet      Volume Oil Total: 26.28 mL      Total Boards Crossed: 657 Boards

Forward Oil Total: 14.76 mL  
Forward Boards Crossed: 369 Boards

Reverse Oil Total: 11.52 mL  
Reverse Boards Crossed: 288 Boards

Drop 40'

Conditioner:  
Kegel Ice

TransferType:  
Transfer Brush

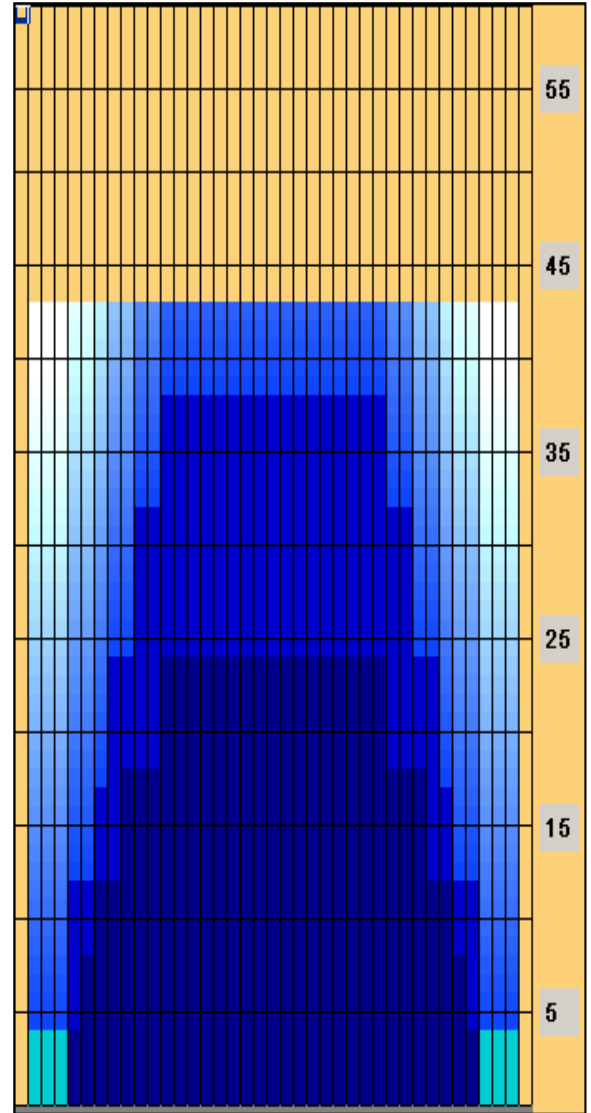
	Start	Stop	Loads	Speed	Crossed	Start	End	Feet	T.Oil
1	2L	2R	4	10	148	0.0	4.2	4.2	5920
2	6L	6R	3	10	87	4.2	8.4	4.2	3480
3	7L	7R	2	14	54	8.4	12.3	3.9	2160
4	9L	9R	2	22	46	12.3	18.5	6.2	1840
5	12L	12R	2	22	34	18.5	24.7	6.2	1360
6	12L	12R	0	26	0	24.7	43.0	18.3	0

Forward

Reverse

Combined

Buff



	Start	Stop	Loads	Speed	Crossed	Start	End	Feet	T.Oil
1	2L	2R	0	30	0	43.0	38.0	-5.0	0
2	12L	12R	2	22	34	38.0	31.8	-6.2	1360
3	10L	10R	3	18	63	31.8	24.2	-7.6	2520
4	8L	8R	3	18	75	24.2	16.6	-7.6	3000
5	7L	7R	2	18	54	16.6	11.5	-5.1	2160
6	5L	5R	2	22	62	11.5	5.3	-6.2	2480
7	2L	2R	0	14	0	5.3	0.0	-5.3	0

Arrow Zone Ratios

Item	2-5L:16L-20	6-10L:16-20	11-15L:16L-20	16L-20:20-16R	16L-20:20-16R	20-16R:15-11R	20-16R:10-6R	20-16R:5-2R
ul Arrow	180	616	968	1000	1000	968	616	180
Zone Ratio	5.56	1.62	1.03	1	1	1.03	1.62	5.56

Track Zone Ratios

Item	3L-7L:18L-18R	8L-12L:18L-18R	13L-17L:18L-18R	18L-18R:17R-13R	18L-18R:12R-8R	18L-18R:7R-3R
Description	Outside Track:Middle	Middle Track:Middle	Inside Track:Middle	Middle: Inside Track	Middle:Middle Track	Middle:Outside Track
Track Zone Ratio	3.47	1.24	1	1	1.24	3.47

