



# Kesää odotellessa

Oil Per Board: 50 uL      Oil Pattern Distance: 43 Feet      Volume Oil Total: 25.5 mL      Total Boards Crossed: 510 Boards

Forward Oil Total: 12.2 mL  
Forward Boards Crossed: 244 Boards

Reverse Oil Total: 13.3 mL  
Reverse Boards Crossed: 266 Boards

Drop 40'

Conditioner:  
Kegel Ice

TransferType:  
Transfer Brush

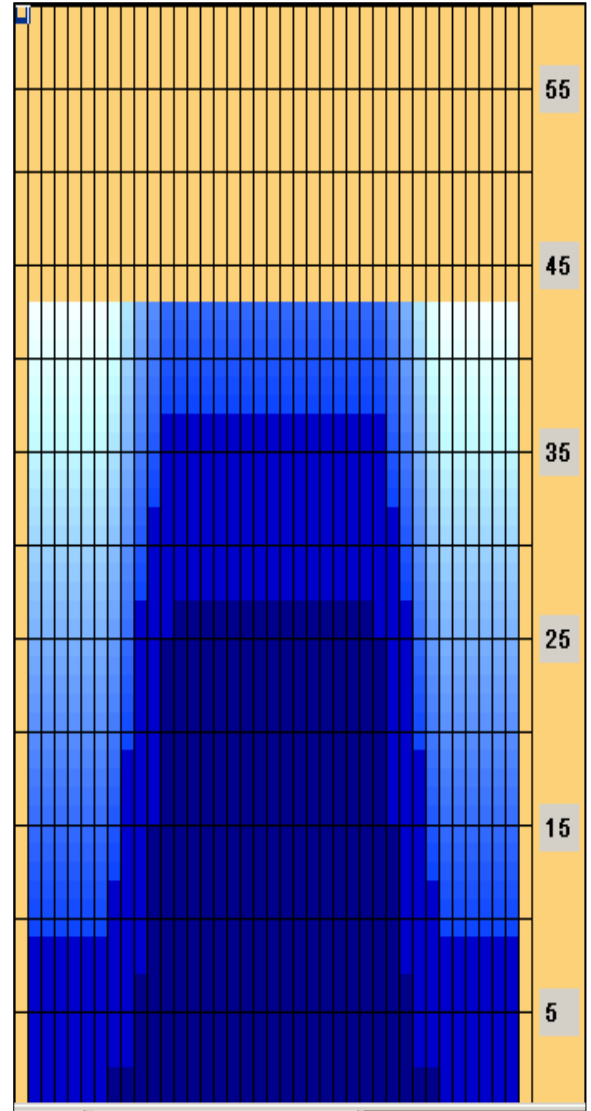
	Start	Stop	Loads	Speed	Crossed	Start	End	Feet	T.Oil
1	2L	2R	1	14	37	0.0	0.0	0.0	1850
2	8L	8R	1	18	25	0.0	2.5	2.5	1250
3	10L	10R	2	18	42	2.5	7.6	5.1	2100
4	11L	11R	3	18	57	7.6	15.2	7.6	2850
5	12L	12R	4	18	68	15.2	25.4	10.2	3400
6	13L	13R	1	18	15	25.4	27.9	2.5	750
7	2L	2R	0	18	0	27.9	39.0	11.1	0
8	2L	2R	0	22	0	39.0	43.0	4.0	0

Forward

Reverse

Combined

Buff



	Start	Stop	Loads	Speed	Crossed	Start	End	Feet	T.Oil
1	2L	2R	0	30	0	43.0	37.0	-6.0	0
2	12L	12R	2	18	34	37.0	31.9	-5.1	1700
3	11L	11R	2	18	38	31.9	26.8	-5.1	1900
4	10L	10R	3	18	63	26.8	19.2	-7.6	3150
5	9L	9R	3	18	69	19.2	11.6	-7.6	3450
6	8L	8R	1	18	25	11.6	9.1	-2.5	1250
7	2L	2R	1	18	37	9.1	6.6	-2.5	1850
8	2L	2R	0	14	0	6.6	0.0	-6.6	0

Arrow Zone Ratios

Item	2-5L:16L-20	6-10L:16-20	11-15L:16L-20	16L-20:20-16R	16L-20:20-16R	20-16R:15-11R	20-16R:10-6R	20-16R:5-2R
ul Arrow	100	270	1120	1200	1200	1120	270	100
Zone Ratio	12	4.44	1.07	1	1	1.07	4.44	12

Track Zone Ratios

Item	3L-7L:18L-18R	8L-12L:18L-18R	13L-17L:18L-18R	18L-18R:17R-13R	18L-18R:12R-8R	18L-18R:7R-3R
Description	Outside Track:Middle	Middle Track:Middle	Inside Track:Middle	Middle: Inside Track	Middle:Middle Track	Middle:Outside Track
Track Zone Ratio	12	1.9	1	1	1.9	12

