



KEV-Games

Oil Per Board: 40 uL Oil Pattern Distance: 43 Feet Volume Oil Total: 27.92 mL Total Boards Crossed: 698 Boards

Forward Oil Total: 15.12 mL
Forward Boards Crossed: 378 Boards

Reverse Oil Total: 12.8 mL
Reverse Boards Crossed: 320 Boards

Drop 38'

Conditioner:
Kegel Ice

TransferType:
Transfer Brush

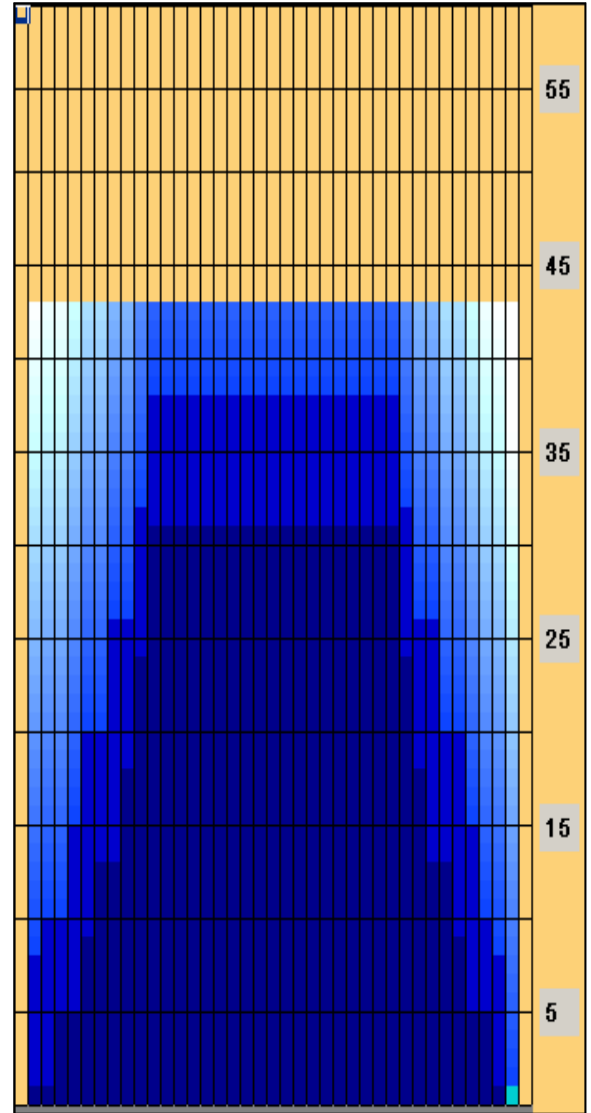
	Start	Stop	Loads	Speed	Crossed	Start	End	Feet	T.Oil
1	2L	2R	2	14	74	0.0	1.9	1.9	2960
2	4L	4R	2	14	66	1.9	5.8	3.9	2640
3	6L	6R	2	14	58	5.8	9.7	3.9	2320
4	7L	7R	2	14	54	9.7	13.6	3.9	2160
5	9L	9R	2	18	46	13.6	18.7	5.1	1840
6	10L	10R	2	22	42	18.7	24.9	6.2	1680
7	11L	11R	2	22	38	24.9	31.1	6.2	1520
8	2L	2R	0	22	0	31.1	43.0	11.9	0

Forward

Reverse

Combined

Buff



	Start	Stop	Loads	Speed	Crossed	Start	End	Feet	T.Oil
1	2L	2R	0	22	0	43.0	38.0	-5.0	0
2	11L	11R	2	22	38	38.0	31.8	-6.2	1520
3	10L	10R	2	22	42	31.8	25.6	-6.2	1680
4	8L	8R	2	18	50	25.6	20.5	-5.1	2000
5	6L	6R	2	18	58	20.5	15.4	-5.1	2320
6	5L	5R	2	18	62	15.4	10.3	-5.1	2480
7	3L	4R	1	18	34	10.3	7.8	-2.5	1360
8	2L	3R	1	18	36	7.8	5.3	-2.5	1440
9	2L	2R	0	14	0	5.3	0.0	-5.3	0

Arrow Zone Ratios

Item	2-5L:16L-20	6-10L:16-20	11-15L:16L-20	16L-20:20-16R	16L-20:20-16R	20-16R:15-11R	20-16R:10-6R	20-16R:5-2R
ul Arrow	210	656	1040	1040	1040	1040	656	190
Zone Ratio	4.95	1.59	1	1	1	1	1.59	5.47

Track Zone Ratios

Item	3L-7L:18L-18R	8L-12L:18L-18R	13L-17L:18L-18R	18L-18R:17R-13R	18L-18R:12R-8R	18L-18R:7R-3R
Description	Outside Track:Middle	Middle Track:Middle	Inside Track:Middle	Middle: Inside Track	Middle:Middle Track	Middle:Outside Track
Track Zone Ratio	2.95	1.2	1	1	1.2	3.02

