



# Pääsiäiskisa 2019

Oil Per Board: 40 uL      Oil Pattern Distance: 42 Feet      Volume Oil Total: 27 mL      Total Boards Crossed: 675 Boards

Forward Oil Total: 15.6 mL  
Forward Boards Crossed: 390 Boards

Reverse Oil Total: 11.4 mL  
Reverse Boards Crossed: 285 Boards

Drop 36'

Conditioner:  
Kegel Ice

TransferType:  
TB

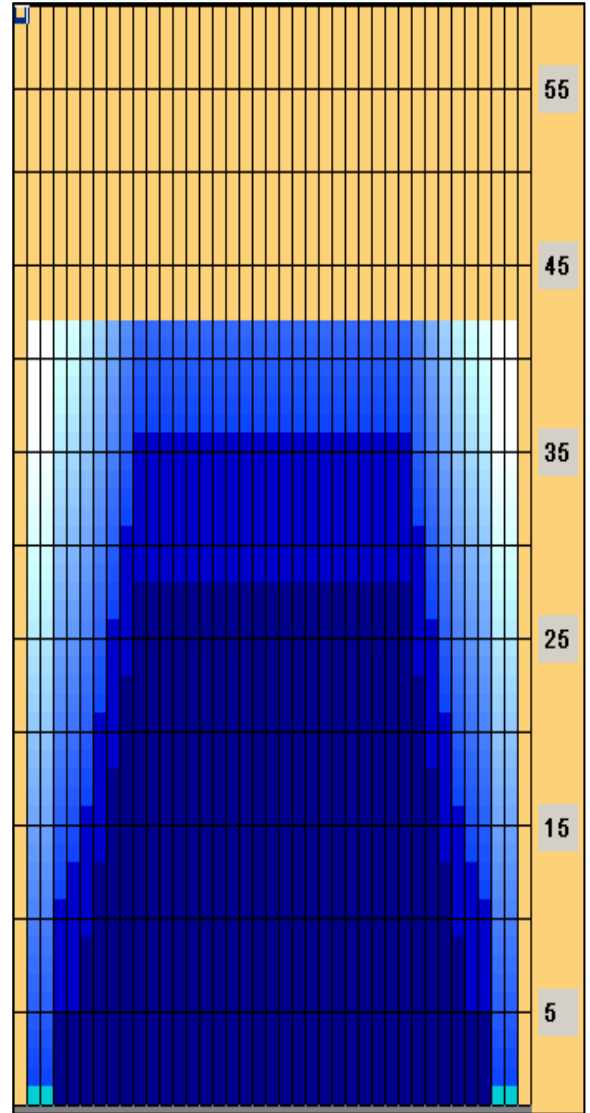
	Start	Stop	Loads	Speed	Crossed	Start	End	Feet	T.Oil
1	2L	2R	2	10	74	0.0	1.4	1.4	2960
2	4L	4R	2	14	66	1.4	5.3	3.9	2640
3	6L	6R	2	14	58	5.3	9.2	3.9	2320
4	7L	7R	2	14	54	9.2	13.1	3.9	2160
5	8L	8R	2	18	50	13.1	18.2	5.1	2000
6	9L	9R	2	18	46	18.2	23.3	5.1	1840
7	10L	10R	2	18	42	23.3	28.4	5.1	1680
8	2L	2R	0	30	0	28.4	42.0	13.6	0

Forward

Reverse

Combined

Buff



	Start	Stop	Loads	Speed	Crossed	Start	End	Feet	T.Oil
1	2L	2R	0	30	0	42.0	36.0	-6.0	0
2	10L	10R	2	18	42	36.0	30.9	-5.1	1680
3	9L	9R	2	18	46	30.9	25.8	-5.1	1840
4	8L	8R	2	18	50	25.8	20.7	-5.1	2000
5	7L	7R	2	18	54	20.7	15.6	-5.1	2160
6	6L	6R	1	18	29	15.6	13.1	-2.5	1160
7	5L	5R	1	14	31	13.1	11.2	-1.9	1240
8	4L	4R	1	14	33	11.2	9.3	-1.9	1320
9	2L	2R	0	10	0	9.3	0.0	-9.3	0

Arrow Zone Ratios

Item	2-5L:16L-20	6-10L:16-20	11-15L:16L-20	16L-20:20-16R	16L-20:20-16R	20-16R:15-11R	20-16R:10-6R	20-16R:5-2R
ul Arrow	150	680	1000	1000	1000	1000	680	150
Zone Ratio	6.67	1.47	1	1	1	1	1.47	6.67

Track Zone Ratios

Item	3L-7L:18L-18R	8L-12L:18L-18R	13L-17L:18L-18R	18L-18R:17R-13R	18L-18R:12R-8R	18L-18R:7R-3R
Description	Outside Track:Middle	Middle Track:Middle	Inside Track:Middle	Middle: Inside Track	Middle:Middle Track	Middle:Outside Track
Track Zone Ratio	3.57	1.11	1	1	1.11	3.57

