



Kevätpotti

Oil Per Board: 40 uL Oil Pattern Distance: 41 Feet Volume Oil Total: 24.04 mL Total Boards Crossed: 601 Boards

Forward Oil Total: 14.12 mL
Forward Boards Crossed: 353 Boards

Reverse Oil Total: 9.92 mL
Reverse Boards Crossed: 248 Boards

Drop 35'

Conditioner:
Kegel Ice

TransferType:
Transfer Brush

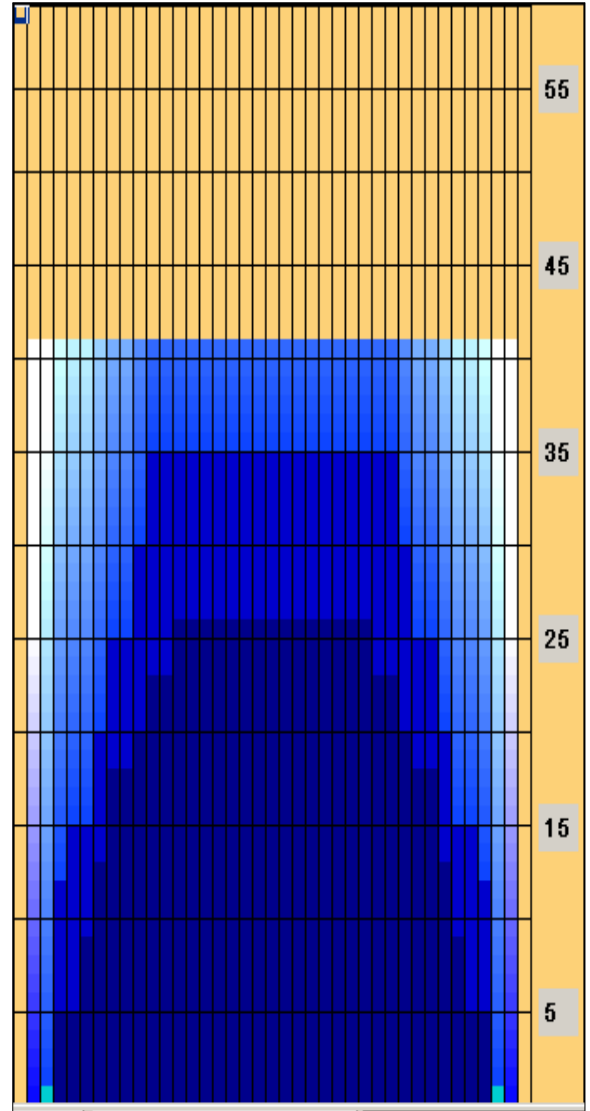
	Start	Stop	Loads	Speed	Crossed	Start	End	Feet	T.Oil
1	3L	3R	2	10	70	0.0	1.4	1.4	2800
2	4L	4R	2	14	66	1.4	5.3	3.9	2640
3	6L	6R	2	14	58	5.3	9.2	3.9	2320
4	7L	7R	2	14	54	9.2	13.1	3.9	2160
5	8L	8R	2	18	50	13.1	18.2	5.1	2000
6	10L	10R	1	18	21	18.2	20.7	2.5	840
7	11L	11R	1	18	19	20.7	23.2	2.5	760
8	13L	13R	1	22	15	23.2	26.3	3.1	600
9	2L	2R	0	30	0	26.3	41.0	14.7	0

Forward

Reverse

Combined

Buff



	Start	Stop	Loads	Speed	Crossed	Start	End	Feet	T.Oil
1	2L	2R	0	30	0	41.0	35.0	-6.0	0
2	11L	11R	2	18	38	35.0	29.9	-5.1	1520
3	10L	10R	2	18	42	29.9	24.8	-5.1	1680
4	8L	8R	2	18	50	24.8	19.7	-5.1	2000
5	7L	7R	2	18	54	19.7	14.6	-5.1	2160
6	5L	5R	1	18	31	14.6	12.1	-2.5	1240
7	4L	4R	1	14	33	12.1	10.2	-1.9	1320
8	2L	2R	0	14	0	10.2	0.0	-10.2	0

Arrow Zone Ratios

Item	2-5L:16L-20	6-10L:16-20	11-15L:16L-20	16L-20:20-16R	16L-20:20-16R	20-16R:15-11R	20-16R:10-6R	20-16R:5-2R
ul Arrow	130	568	904	920	920	904	568	130
Zone Ratio	7.08	1.62	1.02	1	1	1.02	1.62	7.08

Track Zone Ratios

Item	3L-7L:18L-18R	8L-12L:18L-18R	13L-17L:18L-18R	18L-18R:17R-13R	18L-18R:12R-8R	18L-18R:7R-3R
Description	Outside Track:Middle	Middle Track:Middle	Inside Track:Middle	Middle: Inside Track	Middle:Middle Track	Middle:Outside Track
Track Zone Ratio	3.48	1.21	1	1	1.21	3.48

