



KEV-Games 2018

Oil Per Board: 40 uL Oil Pattern Distance: 43 Feet Volume Oil Total: 26.32 mL Total Boards Crossed: 658 Boards

Forward Oil Total: 12.72 mL
 Forward Boards Crossed: 318 Boards

Reverse Oil Total: 13.6 mL
 Reverse Boards Crossed: 340 Boards

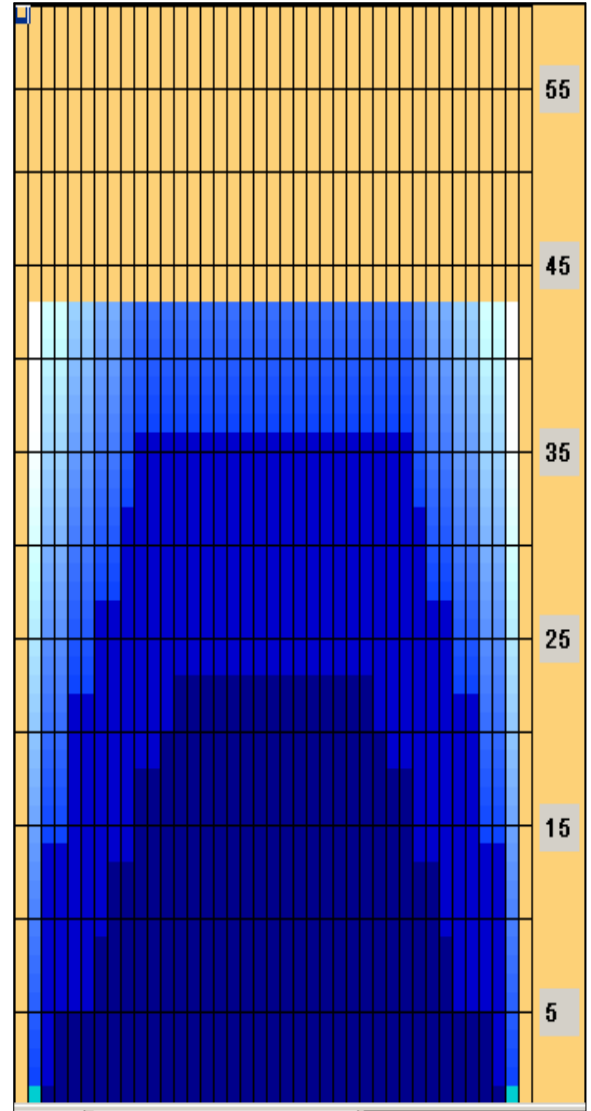
Drop 37'

Conditioner:
Kegel Ice

TransferType:
Transfer Brush

	Start	Stop	Loads	Speed	Crossed	Start	End	Feet	T.Oil
1	2L	2R	2	10	74	0.0	1.4	1.4	2960
2	4L	4R	2	14	66	1.4	5.3	3.9	2640
3	7L	7R	2	14	54	5.3	9.2	3.9	2160
4	8L	8R	2	14	50	9.2	13.1	3.9	2000
5	10L	10R	2	18	42	13.1	18.2	5.1	1680
6	12L	12R	1	18	17	18.2	20.7	2.5	680
7	13L	13R	1	18	15	20.7	23.2	2.5	600
8	13L	13R	0	30	0	23.2	43.0	19.8	0

- Forward
- Reverse
- Combined
- Buff



	Start	Stop	Loads	Speed	Crossed	Start	End	Feet	T.Oil
1	2L	2R	0	30	0	43.0	36.0	-7.0	0
2	10L	10R	2	14	42	36.0	32.1	-3.9	1680
3	9L	9R	2	18	46	32.1	27.0	-5.1	1840
4	7L	7R	2	18	54	27.0	21.9	-5.1	2160
5	5L	5R	3	18	93	21.9	14.3	-7.6	3720
6	3L	3R	3	18	105	14.3	6.7	-7.6	4200
7	2L	2R	0	10	0	6.7	0.0	-6.7	0

Arrow Zone Ratios

Item	2-5L:16L-20	6-10L:16-20	11-15L:16L-20	16L-20:20-16R	16L-20:20-16R	20-16R:15-11R	20-16R:10-6R	20-16R:5-2R
ul Arrow	240	640	936	960	960	936	640	240
Zone Ratio	4	1.5	1.03	1	1	1.03	1.5	4

Track Zone Ratios

Item	3L-7L:18L-18R	8L-12L:18L-18R	13L-17L:18L-18R	18L-18R:17R-13R	18L-18R:12R-8R	18L-18R:7R-3R
Description	Outside Track:Middle	Middle Track:Middle	Inside Track:Middle	Middle: Inside Track	Middle:Middle Track	Middle:Outside Track
Track Zone Ratio	2.61	1.19	1	1	1.19	2.61

