



Kevätpotti 2

Oil Per Board: 40 uL Oil Pattern Distance: 42 Feet Volume Oil Total: 24.04 mL Total Boards Crossed: 601 Boards

Forward Oil Total: 13.52 mL
Forward Boards Crossed: 338 Boards

Reverse Oil Total: 10.52 mL
Reverse Boards Crossed: 263 Boards

Drop 40'

Conditioner:
Kegel Ice

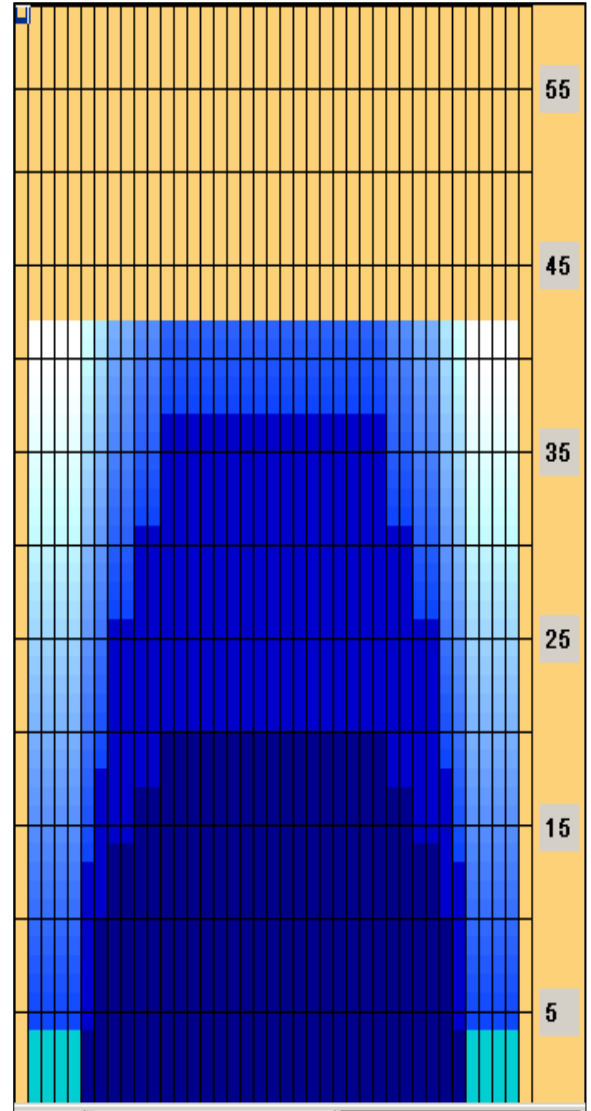
TransferType:
Transfer Brush

	Start	Stop	Loads	Speed	Crossed	Start	End	Feet	T.Oil
1	2L	2R	4	10	148	0.0	4.2	4.2	5920
2	7L	7R	3	14	81	4.2	10.1	5.9	3240
3	8L	8R	2	14	50	10.1	14.0	3.9	2000
4	10L	10R	2	14	42	14.0	17.9	3.9	1680
5	12L	12R	1	18	17	17.9	20.4	2.5	680
6	12L	12R	0	30	0	20.4	42.0	21.6	0

Navigation: Forward Reverse More Info

	Start	Stop	Loads	Speed	Crossed	Start	End	Feet	T.Oil
1	2L	2R	0	30	0	42.0	37.0	-5.0	0
2	12L	12R	2	22	34	37.0	30.8	-6.2	1360
3	10L	10R	2	18	42	30.8	25.7	-5.1	1680
4	8L	8R	3	18	75	25.7	18.1	-7.6	3000
5	7L	7R	2	18	54	18.1	13.0	-5.1	2160
6	6L	6R	2	22	58	13.0	6.8	-6.2	2320
7	2L	2R	0	10	0	6.8	0.0	-6.8	0

Navigation: Forward Reverse More Info



Legend:

- Forward (Light Blue)
- Reverse (Dark Blue)
- Combined (Medium Blue)
- Buff (Yellow)

Arrow Zone Ratios

Item	2-5L:16L-20	6-10L:16-20	11-15L:16L-20	16L-20:20-16R	16L-20:20-16R	20-16R:15-11R	20-16R:10-6R	20-16R:5-2R
ul Arrow	160	552	896	920	920	896	552	160
Zone Ratio	5.75	1.67	1.03	1	1	1.03	1.67	5.75

Track Zone Ratios

Item	3L-7L:18L-18R	8L-12L:18L-18R	13L-17L:18L-18R	18L-18R:17R-13R	18L-18R:12R-8R	18L-18R:7R-3R
Description	Outside Track:Middle	Middle Track:Middle	Inside Track:Middle	Middle: Inside Track	Middle:Middle Track	Middle:Outside Track
Track Zone Ratio	3.97	1.21	1	1	1.21	3.97

